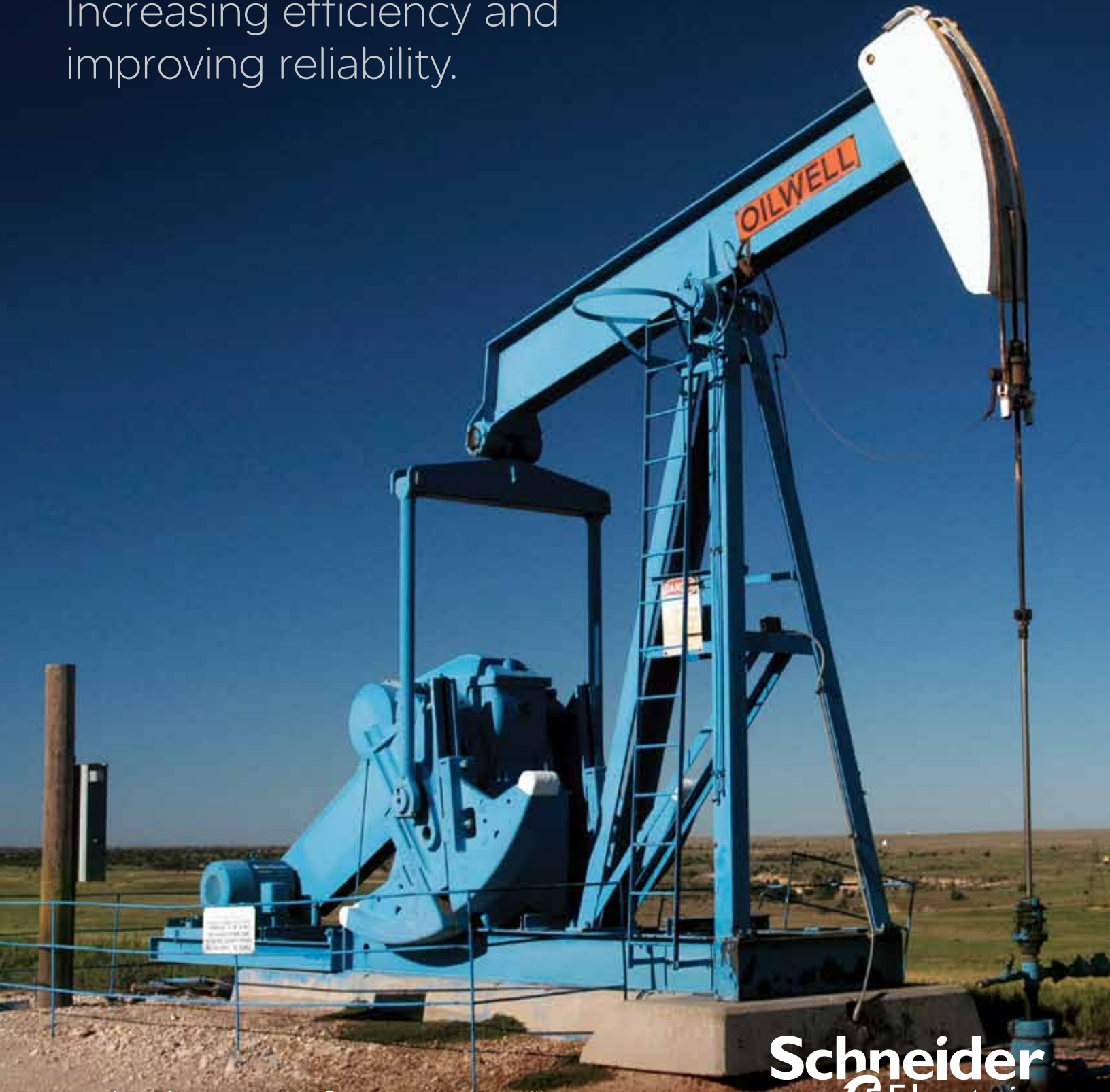


Schneider Electric Rod Pump Control Solutions

Increasing efficiency and improving reliability.



Make the most of your energySM

Schneider
Electric

Reliability and energy efficiency initiatives...

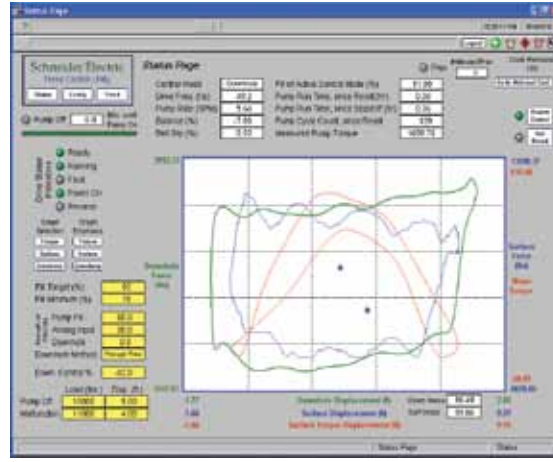
...can significantly add to the profitability of the more than two million rod pump wells currently in production worldwide, as well as the efficiency of new ones by improving the efficiency of each stroke, reducing mechanical stress and maximizing production recovery.



As a leader in global energy management, Schneider Electric provides a proven rod pump solution that can help you squeeze more out of each well by offering an advanced extraction control solution that:

- Maximizes production output
- Reduces operational expenses
- Improves pump efficiency
- Extends equipment life
- Reduces risk to people and equipment
- Decreases energy consumption and waste
- Streamlines data collection, sharing and analysis





◀ *Dynamometer Plot – Depicts downhole, surface and torque cards, which may be utilized to improve pump productivity and minimize the risk of downtime and equipment damage.*

Rod Pump Control Solutions for the Digital Oil Field

The Schneider Electric rod pump control solution is part of a growing portfolio of tested and validated solution architectures that are easy to deploy. It can be used as an independent system or combined with other offers from Schneider Electric to create a comprehensive digital oil field (DOF) solution.

Schneider Electric offers three rod pump protection and optimization solutions to match requirements and budget:

1. Torque Control

- A cost effective solution for shallow wells.
- Eliminates the need for a separate pump off control timer and automatically adjusts to the changing conditions in the well.
- Ensures maximum recovery and minimum off time is maintained.

2. **Surface Card Control** – By utilizing the information obtained from an external load cell, we enable you to increase well depth optimization. Our solution allows for integration to third party systems to be used in analysis and operation.

3. **Down-hole Card Control** – Optimization using well data, visual system tuning and an advanced algorithm to maximize pump fill. This solution can help you achieve the “ideal dynamometer card” to fully optimize production and equipment operation. It also analyzes each pump stroke and continually optimizes well performance even under changing conditions. This data is then available for advanced diagnostics on well performance and aids in identifying issues that could limit production or damage equipment.

Understanding the Value of Schneider Electric’s Rod Pump Control Solution

Each of these three solutions offers a significant degree of savings that are made possible through the combination of sophisticated technology and industry experience that has been embedded in a self-adjusting rod pump control system with “Pump Fill Controller” (PFC) function. Available only from Schneider Electric, our Pump Fill Controller improves productivity, decreases energy usage and avoids maintenance and equipment costs by:

- Detecting pump-off conditions by accurately analyzing the systems operation and automatically adjust to changing demands.
- Adjusting pump speed with a goal to achieve maximum pump fill, avoiding gas lock and fluid pound.
- Extending equipment life by reducing electrical and mechanical stress, reducing motor temperature and negative torque; as well as minimizing rod breaks.
- Providing near-unity power factor at all speeds and loads to avoid utility power factor penalties and achieve greater energy efficiency.

Talk to someone you can trust!



For over 100 years, Schneider Electric has been known and respected for some of the world's most reliable electrical products. Today, this has grown to include proven energy, power management, control and automation solutions.

Augmenting our product expertise are specialized teams of industry experts. Working in partnership with you, they apply our leading power, control and automation products to your business in order to deliver innovative solutions that improve quality, performance and productivity. Solutions that are proven and backed by a commitment to meeting your global needs without losing sight of your unique local and regional requirements.



Contact your sales representative today to learn how Schneider Electric can improve operational performance and help your business to **achieve a competitive advantage** or visit **www.schneider-electric.us/your-business/oil-gas**.

Schneider Electric Canada, Inc.

5985 McLaughlin Road
Mississauga, ON L5R 1B8
Tel: 1-800-565-6699
www.schneider-electric.com/ca